



Del Medio Park Mountain View, California

Civil and Structural Engineering

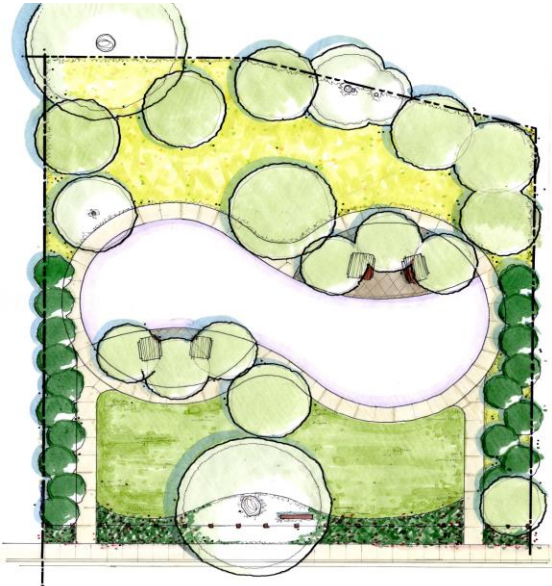


Image courtesy of SSA Landscape Architects, Inc.

Client Reference:

Steve Sutherland, Principal
Landscape Architect
SSA Landscape Architects, Inc.
303 Potrero Street, Suite 40-C
Santa Cruz, CA 95060
(831) 459-0455

Budget: \$600,000

Del Medio Park is a 0.5-acre neighborhood mini-park with children's play structures, a walking trail, and a climbing rock/water feature. The park is located on two residential lots purchased by the City of Mountain View and cleared to make way for a new neighborhood "pocket" park.

MME prepared storm water drainage, utility and erosion control plans and provided structural engineering for the solar trellis.

A complication of the design included a requirement to thread new site drainage and sewer pipes between arrays of existing utility obstructions in the street. Good coordination between MME, SSA Landscape Architects and the surveyor enabled us to find the right vertical and horizontal pipe alignments to create successful connections minimizing construction delays.

